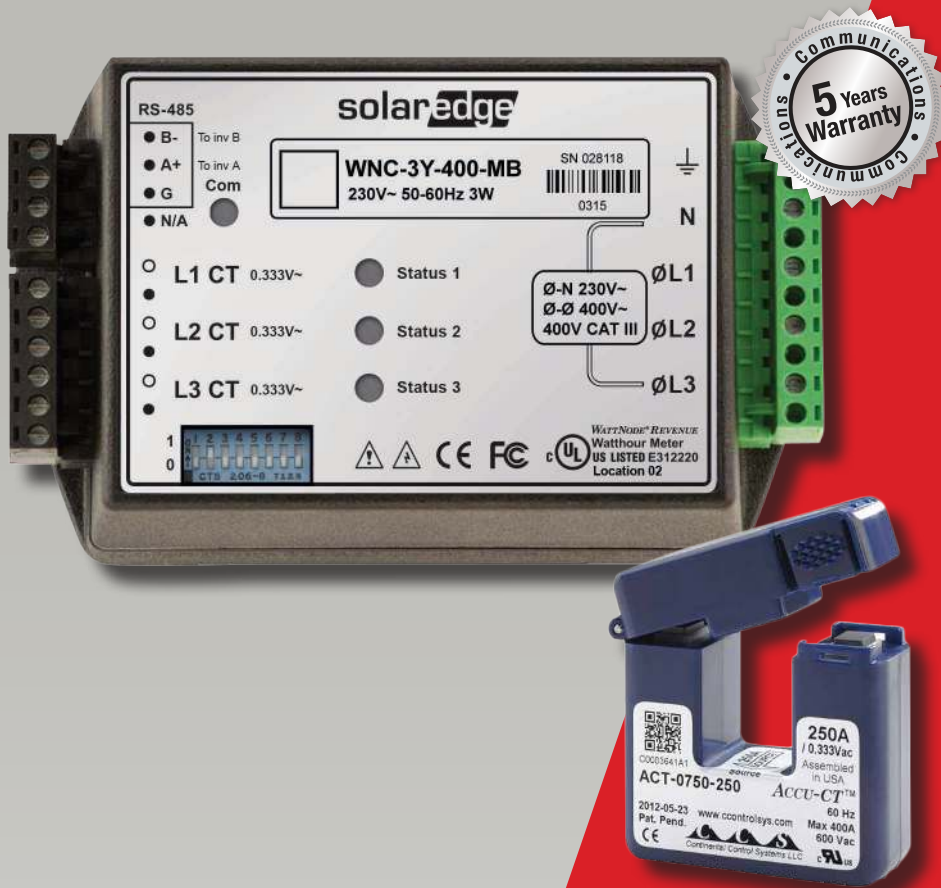




SolarEdge Modbus Meter

SE-WNC-3Y400-MB-K1



ACCESSORIES

Modbus Meter for SolarEdge Installations

- High accuracy meter readings for production/consumption monitoring
- Import/Export meter readings for export limitation functionality
- Small and easy to install - fits in standard electrical panel
- Supports residential, commercial and utility-size installations



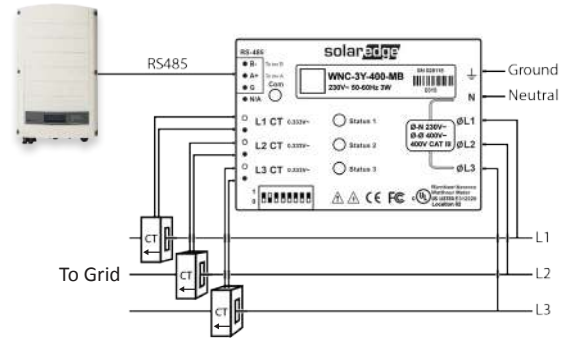
SolarEdge Modbus Meter

SE-WNC-3Y400-MB-K1

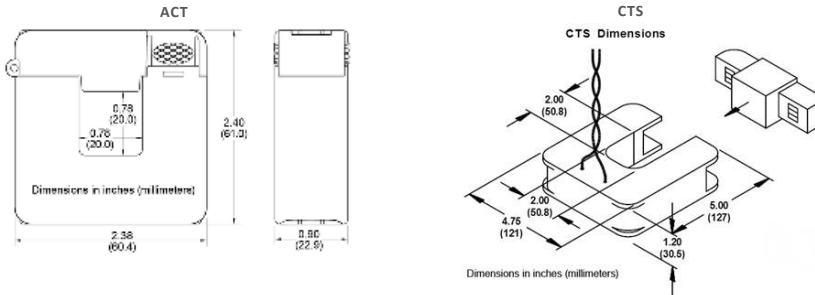
When ordering a meter, order current transformers as well:

| CURRENT TRANSFORMER MODELS(*) | RATED RMS CURRENT | DIMENSIONS (INTERNAL/ EXTERNAL) |
|-------------------------------|-------------------|---------------------------------|
| SE-ACT-0750-50 | 50 A | 20 x 20 mm / 61 x 60.4 mm |
| SE-ACT-0750-100 | 100 A | |
| SE-ACT-0750-250 | 250 A | |
| SE-CTS-2000-1000 | 1000 A | 50.8 x 50.8 mm / 121 x 127 mm |

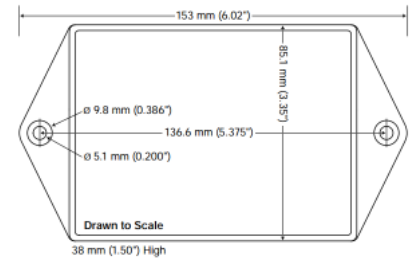
* One current transformer per phase; for other ratings contact SolarEdge



Current Transformer Dimensions



Meter Dimensions



| | SE-WNC-3Y400-MB-K1 | UNITS |
|--|---|-------|
| ELECTRICAL SERVICE | | |
| Operating Voltage Range - Line to Neutral / Line to Line | 184-264.5 / 320-460 | Vac |
| AC Frequency | 50/60 | Hz |
| Grids Supported - Single Phase ; Three Phase* | L / N / PE ; L1 / L2 / L3 / N / PE | |
| Power Consumption (typ.) | 1.8 | W |
| COMMUNICATION | | |
| Supported Communication Interfaces | RS485 | |
| Response time | ≤1** | sec |
| Default Device ID (Modbus) | 2 | |
| ACCURACY (@25°C, PF:0.7-1)*** | | |
| 1% - 100% of Rated CT Current | ±1.5 | % |
| STANDARD COMPLIANCE | | |
| Safety | IEC 61010-1 | |
| Immunity | EN 61326, EN 61000-4-2, EN 61000-4-3, EN 61000-4-4, EN 61000-4-5, EN 61000-4-6, EN 61000-4-11 | |
| Emissions | EN 55022 Class B | |
| INSTALLATION SPECIFICATIONS | | |
| Dimensions (HxWxD) | 85 x 153 x 38 | mm |
| Weight | 310 | gm |
| Enclosure type | High impact, ABS and/or ABS/PC plastic UL 94V-0, IEC FV-0 | |
| Operating Temperature Range | -30 to 55 | °C |
| Relative Humidity (noncondensing) | 5 - 90 | % |
| Protection Rating | Indoor (Outdoor when installed in an outdoor enclosure) | |
| Mounting Type | DIN Rail / Wall mount | |

* PE (Protective Earth) connection is not required for meter operation

** When meter is connected at grid connection point, and when RS485 is used for multiple inverters

*** Using ACT-0750 CT models

