



# SolarEdge Single Phase StorEdge Inverter for Europe, APAC & South Africa

SE5000-XXS / SE6000-XXS



STOREDGE™

## Ideal for battery storage and backup power

- **Supports StorEdge Solution Applications** - reduce electric bills with maximised self-consumption and profile programming
- **Provides Backup Power** - StorEdge Inverter includes the hardware required for automatically supplying power to backed-up loads in the event of grid outages
- **Simple Design and Installation** - single inverter for managing PV production, battery storage and backup power
- **Enhanced Safety** - designed to eliminate high voltage during installation, maintenance or firefighting
- **Full Visibility** - built-in monitoring of battery status, PV production, remaining backup power, and self-consumption data
- **Easy Maintenance** - remote access to inverter software



# SolarEdge Single Phase StorEdge Inverter

for Europe, APAC & South Africa

SE5000-XXS<sup>(1)</sup> / SE6000-XXS<sup>(1)</sup>

	SE5000-XXS	SE6000-XXS	
<b>OUTPUT - AC (LOADS/GRID)</b>			
Rated AC Power Output	5000 <sup>(2)</sup>	6000	VA
Max AC Power Output	5000 <sup>(2)</sup>	6000	VA
AC Output Voltage (Nominal), L-N <sup>(3)</sup>	220 / 230		Vac
AC Output Voltage Range, L-N	184 - 264.5		Vac
AC Frequency	50 / 60 ± 5		Hz
Maximum Continuous Output Current	27		A
Residual Current Detector / Residual Current Step Detector	300 / 30		mA
Utility Monitoring, Islanding Protection, Country Configurable Thresholds	Yes		
Charge Battery from AC (if Allowed)	Yes		
THD	<3		%
Power factor with rated power	>0.99 (configurable; 0.9 leading to 0.9 lagging)		
Typical Nighttime Power Consumption	<5		W
<b>OUTPUT - AC (BACKUP POWER)<sup>(4)</sup></b>			
Rated AC Power Output	Lower Power Output: 3300; Higher Power Output: 5000 <sup>(5)</sup>		VA
Max AC Power Output - Surge	Lower Power Output: 3300; Higher Power Output: 7300 <sup>(5)</sup>		VA
AC Output Voltage (Nominal)	220 / 230		Vac
AC Output Voltage Range	184 - 264.5		Vac
AC Frequency	50 / 60 ± 5		Hz
Maximum Continuous Output Current	22		A
AC Breaker	Yes		
THD	<5		%
Power factor with rated power	0.2 leading to 0.2 lagging		
Automatic switchover time	<2		sec
Typical Nighttime Power Consumption	<5		W
<b>INPUT - DC (PV and BATTERY)</b>			
Transformer-less, Ungrounded	Yes		
Max Input Voltage	500		Vdc
Nom DC Input Voltage	400		Vdc
Reverse-Polarity Protection	Yes		
Ground-Fault Isolation Detection	600kΩ Sensitivity		
Maximum Inverter Efficiency	97.6		%
European Weighted Efficiency	97.4		%
<b>INPUT - DC (PV)</b>			
Maximum DC Power (STC)	6750	8100	W
Max Input Current	19.5	23	Adc
2-pole Disconnection	Yes		
<b>INPUT - DC (BATTERY)</b>			
Supported Battery Types	LG Chem RESU7H LG Chem RESU10H		
Number of Batteries per Inverter	1		
Continuous Power	LG Chem RESU7H: 3500, LG Chem RESU10H: 5000		W
Peak Power	LG Chem RESU7H: 5000, LG Chem RESU10H: 7000		W
Max Input Current	8.5	17.5	Adc
2-pole Disconnection	Yes		
DC Fuses on Plus and Minus	12A (field replaceable)	25A (field replaceable)	

<sup>(1)</sup> xx=RW for Europe and APAC, ZA for South Africa; available in some countries; refer to SolarEdge Supported Countries document:

[http://www.solaredge.com/sites/default/files/se\\_inverters\\_supported\\_countries.pdf](http://www.solaredge.com/sites/default/files/se_inverters_supported_countries.pdf)

<sup>(2)</sup> Limited to 4600VA when inverter is set to South Africa

<sup>(3)</sup> The StorEdge Inverter must be connected Line to Neutral (and not Line to Line)

<sup>(4)</sup> Not designed for standalone applications and requires AC for commissioning

<sup>(5)</sup> Higher power output values apply to inverters with PN: SEXXXX-XXS2XXXX



# SolarEdge Single Phase StorEdge Inverter

for Europe, APAC & South Africa

SE5000-XXS / SE6000-XXS

ADDITIONAL FEATURES		
Supported Communication Interfaces	RS485 for battery, RS485, Ethernet, ZigBee (optional), Wi-Fi (optional)	
Battery Power Supply	Yes, 12V / 53W	
Integrated AC, DC and Communication Connection Unit	Yes	
AC Disconnect	Yes	
Manual Inverter Bypass Switch	Yes	
DC Voltage Rapid Shutdown (PV and Battery)	Yes, according to VDE 2100-712 (pending)	
STANDARD COMPLIANCE (PENDING)		
Safety	IEC-62103 (EN50178), IEC-62109	
Grid Connection Standards <sup>(6)</sup>	VDE 0126-1-1, NRS 097-2-1, AS4777	
Emissions	IEC61000-6-2, IEC61000-6-3, IEC61000-3-11, IEC61000-3-12	
INSTALLATION SPECIFICATIONS		
AC Output (Loads/Grid) conduit size / wire cross section	9-16mm / 2-14mm <sup>2</sup>	
AC Output (Backup) conduit size / wire cross section	9-16mm / 2-14mm <sup>2</sup>	
DC Input (PV)	2 MC4 pairs	
DC Input (Battery)	1 MC4 pair	
Dimensions with Connection Unit (HxWxD)	962 x 315 x 184	mm
Weight with Connection Unit	26.5	kg
Cooling	Natural convection and internal fan (user replaceable)	
Noise	<50	dB(A)
Min - Max Operating Temperature	-20 to +60 <sup>(7)</sup>	°C
Protection Rating	IP65 - Outdoor and Indoor	

<sup>(6)</sup> For all standards refer to Certifications category in Downloads page: <http://www.solaredge.com/groups/support/downloads>

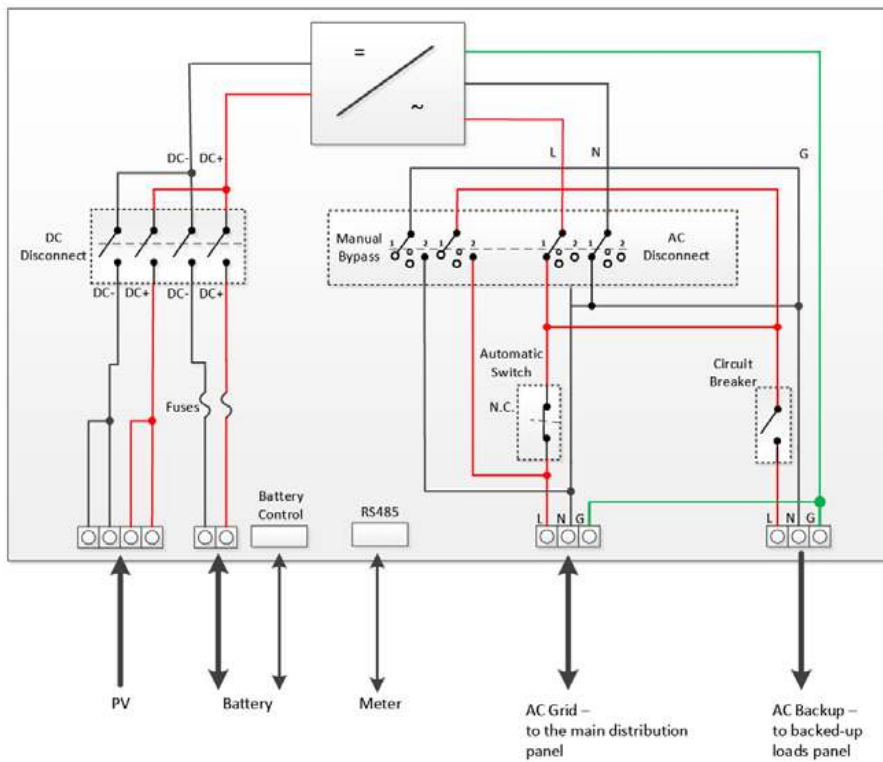
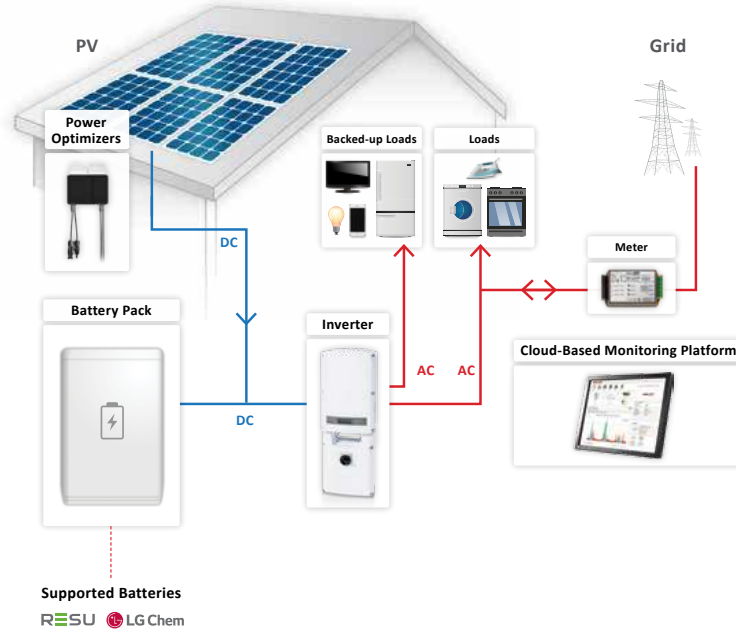
<sup>(7)</sup> Power derating from 50 °C



# SolarEdge Single Phase StorEdge Inverter

for Europe, APAC & South Africa SE5000-XXS / SE6000-XXS

## StorEdge Solution with Backup Power



## LIMITED PRODUCT WARRANTY

This SolarEdge Technologies Ltd. Limited Warranty covers defects in workmanship and materials of the below-listed products for the applicable warranty period set out below:

- **Power optimizers:** 25 years commencing on the earlier of: (i) 4 months from the date the power optimizers are shipped from SolarEdge; and (ii) the installation of the power optimizers, *provided, however*, that for the module embedded power optimizers (CSI and OPJ models), the Warranty Period shall not exceed the maximum of (1) the module product warranty and (2) the module power warranty periods provided by the applicable module manufacturer.
- **Inverters, Safety & Monitoring Interface (SMI), Auto-transformer, GSM Cellular Modem:** 12\* years commencing on the earlier of: (i) 4 months from the date the products are shipped from SolarEdge; and (ii) the installation of the products.
- **StorEdge Interface:** 10 years commencing on the earlier of: (i) 4 months from the date the Interfaces are shipped from SolarEdge; and (ii) the installation of the Interfaces.
- **Home Gateway, Control and Communication Gateway, Firefighter Gateway, Wireless Communication Products excluding GSM Cellular Modem, RS485 Expansion Kit, SolarEdge Meter, Smart Monitoring Combiner Box:** 5 years commencing on the earlier of: (i) 4 months from the date the product is shipped from SolarEdge; and (ii) the installation of the product. Warranty duration of wireless communication products is the same whether or not the product is pre-installed in the inverter.

\* In some countries the inverter warranty is limited to 7 years. For a list of these countries please access [http://www.solaredge.com/warranty\\_exceptions](http://www.solaredge.com/warranty_exceptions)

The Limited Warranty does not apply to components which are separate from the Products, ancillary equipment and consumables, such as, for example, cables, fuses, wires and connectors, whether supplied by SolarEdge or others. Some components may carry their own manufacturer warranty. See product datasheet for more details. In addition, for all power optimizers with a part number ending in C, the SolarEdge warranty does not apply to the input connector.

The Limited Warranty only applies to the buyer who has purchased the Products from an authorized seller of SolarEdge for use in accordance with their intended purpose. The Limited Warranty may be transferred from buyer to any assignee, and will remain in effect for the time period remaining under the foregoing warranties, *provided* that the Products are not moved outside its original country of installation and any reinstallation is done in accordance with the installation directions and use guidelines accompany the Products (collectively the "Documentation").

If, during the applicable Warranty Period, buyer discovers any defect in workmanship and materials and seeks to activate the Limited Warranty, then buyer shall, promptly after such discovery, report the defect to SolarEdge by sending an email to [support@solaredge.com](mailto:support@solaredge.com) with the following information: (i) a short description of the defect, (ii) the Product's serial number, and (iii) a scanned copy of the purchase receipt or warranty certificate of the applicable Product.

Upon buyer's notification, SolarEdge shall determine whether the reported defect is eligible for coverage under the Limited Warranty. The Product's serial number must be legible and properly attached to the Product in order to be eligible for Warranty coverage. If SolarEdge determines that the reported defect is not eligible for coverage under the Limited Warranty, SolarEdge will notify buyer accordingly and will explain the reason why such coverage is not available. If SolarEdge determines that the reported defect is eligible for coverage under the Limited Warranty, SolarEdge will notify buyer accordingly, and SolarEdge may, in its sole discretion, take any of the following actions:

- repair the Product at SolarEdge's facilities or on-site; or
- issue a credit note for the defective Product in an amount up to its actual value at the time buyer notifies SolarEdge of the defect, as determined by SolarEdge, for use toward the purchase of a new Product; or
- provide Buyer with replacement units for the Product.

SolarEdge will determine whether the Product should be returned to SolarEdge and, if SolarEdge so determined, the Return Merchandise Authorization ("RMA") Procedure (set out below) will be invoked. Where replacement Products are sent, SolarEdge generally sends such products within 48 hours. SolarEdge may use new, used or refurbished parts that are at least functionally equivalent to the original part when making warranty repairs. The repaired Product or replacement parts or Product, as applicable, shall continue to be covered under the Limited Warranty for the remainder of the then-current Warranty Period for the Product.

Where the RMA Procedure is invoked by SolarEdge, SolarEdge will instruct buyer how to package and ship the Product or part(s) to the designated location. SolarEdge will bear the cost of such shipment, upon receipt of the Product or part(s), SolarEdge will, at its expense and sole discretion, either repair or replace the Product or part(s).

SolarEdge will deliver the repaired or replaced Product or part(s) to buyer at buyer's designated location in countries where SolarEdge has an office and/or there is a significant PV market. For the specific list of countries to which such service is provided, please access [http://www.solaredge.com/articles/shipping\\_cost\\_coverage\\_warranty](http://www.solaredge.com/articles/shipping_cost_coverage_warranty). SolarEdge will bear the cost of such shipment, including shipping and customs (where applicable) and buyer shall bear any applicable value added tax. SolarEdge may elect to ship replacement Product and/or part(s) prior to receipt of the Product and/or part(s) to be returned to SolarEdge as per the above.

Where SolarEdge decides to repair the Product or part(s), warranty coverage includes labor and material costs necessarily incurred to correct the Product defect; and where SolarEdge decides to replace the Product or part(s) to which the Limited Warranty applies, warranty coverage includes the cost of the replacement of the Product or part(s). In addition, SolarEdge shall bear shipping costs in respect to the foregoing, as set out above. All other costs, including, without limitation, travel and boarding costs of SolarEdge service personnel that are incurred for repairs of Products on-site, as well as costs related to buyer's employees and contractors repair or replacement activities, are not covered by the Limited Warranty and, unless otherwise agreed in writing in advance by SolarEdge, shall be borne by the buyer.

**Warranty Exclusions:** This Limited Warranty will not apply if (a) buyer is in default under the General Terms and Conditions of other Agreement governing the purchase of the Product, or (b) the Product or any part thereof is:

- damaged as a result of misuse, abuse, accident, negligence or failure to maintain the Product;
- damaged as a result of modifications, alterations or attachments thereto which were not pre-authorized in writing by SolarEdge;
- damaged due to the failure to observe the applicable safety regulations governing the proper use of the Product;
- installed or operated not in strict conformance with the Documentation, including without limitation, not ensuring sufficient ventilation for the Product as described in SolarEdge installation guide;
- opened, modified or disassembled in any way without SolarEdge's prior written consent;
- used in combination with equipment, items or materials not permitted by the Documentation or in violation of local codes and standards;
- damaged or rendered non-functional as a result of power surges, lightning, fire, flood, pest damage, accident, action of third parties, or other events beyond SolarEdge's reasonable control or not arising from normal operating conditions; or
- damaged during or in connection with shipping or transport to or from buyer where buyer arranges such shipping or transport.

This Limited Warranty does not cover cosmetic or superficial defects, dents, marks or scratches, which do not influence the proper functioning of the Product.

THE LIMITED WARRANTIES SET OUT HEREIN ARE IN LIEU OF ANY OTHER WARRANTIES WITH RESPECT TO THE PRODUCTS PURCHASED BY BUYER FROM SOLAREEDGE, WHETHER EXPRESS OR IMPLIED, WRITTEN OR ORAL (INCLUDING ANY WARRANTIES OF MERCHANTABILITY OR FITNESS FOR A PARTICULAR PURPOSE), ALL OF WHICH ARE EXPRESSLY EXCLUDED TO THE FULLEST EXTENT PERMITTED BY APPLICABLE LAW.

Claims by buyer that go beyond the warranty terms set out herein, including claims for compensation or damages, are not covered by the Limited Warranty, insofar as SolarEdge is not subject to statutory liability. In such cases, please contact the company that sold you the Product. Eventual claims in accordance with the law on product liability remain unaffected.

Coverage under the Limited Warranty is subject to buyer complying with the foregoing notification requirements and cooperating with SolarEdge's directions. SolarEdge's sole obligation and buyer's exclusive remedy for any defect warranted hereunder is limited to those actions expressly stated above. Such actions are final and do not grant any further rights, in particular with respect to any claims for compensation.

Unless otherwise specified in an executed Agreement with SolarEdge, the Limited Warranty and related provisions set out herein are subject to SolarEdge's General Terms and Conditions, including, without limitation, the provisions thereof, which relate to disclaimer of warranties, limitation of liability and governing law and jurisdiction.

Revised: June 2016